

Ready-Set-Go!



5 Key Planning Decisions

**As You Successfully Launch Your
Family Recovery Court**

Center for Children and Family Futures
New England Association of Drug Court Professionals Conference | November 28, 2018



Acknowledgement

This presentation is supported by:
Grant #2016-DC-BX-K003 awarded by the
Office of Juvenile Justice and Delinquency
Prevention, Office of Justice Programs, U.S.
Department of Justice.



This project was supported by Grant #2016-DC-BX-K003 awarded by the Office of Juvenile Justice and Delinquency Prevention, Office of Justice Programs, U.S. Department of Justice. The opinions, findings, and conclusions or recommendations expressed in this publication/program/exhibition are those of the author(s) and do not necessarily reflect those of the Department of Justice.

Learning Objectives

- **Identify key decision and planning points for all Family Recovery Courts (FRCs)**
- **Explore the important role of governance structure, leadership, and data during the planning process**
- **Learn from the experiences of FRC teams that have successfully launched a FRC and hear about a newly published resource, *Family Drug Court Planning Guide***

Family Drug Court Model

Judicial Oversight



**Drug Court
Hearings**



**Therapeutic
Jurisprudence**



**Intensive Case
Management &
Recovery Support**



**Enhanced
Family-Based
Services**

Comprehensive Services

1

Do you need a Family Recovery Court?

Using data to establish need for FRC



- **Recovery**
- **Remain at home**
- **Reunification**
- **Repeat maltreatment**
- **Re-entry into out-of-home placement**



**What proportion of
the total CWs
population will your
FRC serve?**



Data as Fuel

Drive decision-making

Demonstrate effectiveness

Secure resources

2

**How will you organize
your work?**

Establishing a governance structure

Involved in Systems That Struggle to Serve Them



The lack of coordination and collaboration across child welfare, substance use disorder treatment, and family or dependency court systems have hindered their ability to fully support these families.

**Multi-
level**

**Executive or Oversight
Committee**

**Multi-
agency**

**Planning
Team**

**Steering
Committee**

Operational Team

Collaborative Structure for Systems Change

EXECUTIVE OR OVERSIGHT COMMITTEE

- Members – Senior officials or executives
- Primary Functions - Final review of approval of policy & practice recommendation, planning for sustainability, and seeking external, leveraged resources beyond the project grants, and engages in communication with external agencies and policy leaders about the project, explaining its goals and pointing out its results
- Convenes quarterly basis

CORE PLANNING TEAM /STEERING COMMITTEE

- Members – Cross-Agency leaders
- Primary Functions – responsible for overall planning and implementation of goals and strategies; ensures ongoing cross-system communication and serves as liaison between oversight committee and workgroups; formulate solutions of barriers identified by workgroups
- Convenes monthly basis

WORKGROUP

Key stakeholders

- Based on established priorities
- Convene monthly or as needed

WORKGROUP

Key stakeholders

- Based on established priorities
- Convene monthly or as needed

WORKGROUP

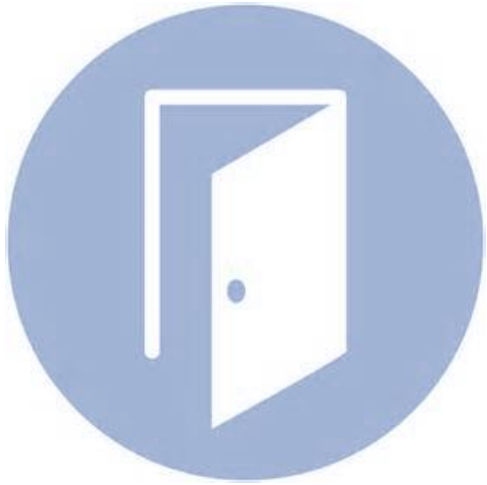
Key stakeholders

- Based on established priorities
- Convene monthly or as needed

WORKGROUP

Key stakeholders

- Based on established priorities
- Convene monthly or as needed



Opportunities to Build a Strong Infrastructure

- **Develop a timeline to hold each other accountable**
- **Identify the right people for the right committees and workgroups**
- **Be crystal clear about functions and membership**
- **Need strong leadership to pull and keep momentum in between meetings**
- **Ensure information flow between different committees and the Planning Team**

3

**What model will you
implement?**

**Selecting a structural design
for your program**

Integrated vs. Parallel

Integrated Model

- **One judge, one court**
- **FRC is embedded into regular dependency dockets with integrated case plans**

Pros:

- **Involves key systems – Court, CWS, Treatment**
- **All-encompassing view of family**

Cons:

- **Ex-parte communication and judicial ethics**
- **Limited scale**

Parallel Model

- **Different judges, separate dockets**
- **FRC is embedded into regular dependency dockets with integrated case plans**

Pros:

- **Confidentiality and protection of “privileged” information**
- **Opportunities to operate at higher scale**

Cons:

- **Communication and information challenges**
- **Can result in duplicative and poorly coordinated case plans**

Key Considerations

- **What is the need of your community or jurisdiction?**
- **Have you identified shared principles and developed goal statements?**
- **Have you weighed the benefits and challenges of each model?**
- **Have you explored all challenges related to information sharing?**

4

How will you set the course for success for families?

Develop key processes for identification, access to treatment, and recovery support



The Adoption and Safe Families Act

ASFA

Time Clock

FRC's goal is safe and stable permanent reunification with a parent in recovery within time frames established by ASFA



No Time to Waste

**Child Welfare –
12-month timetable for
reunification**

Conflicting Clocks

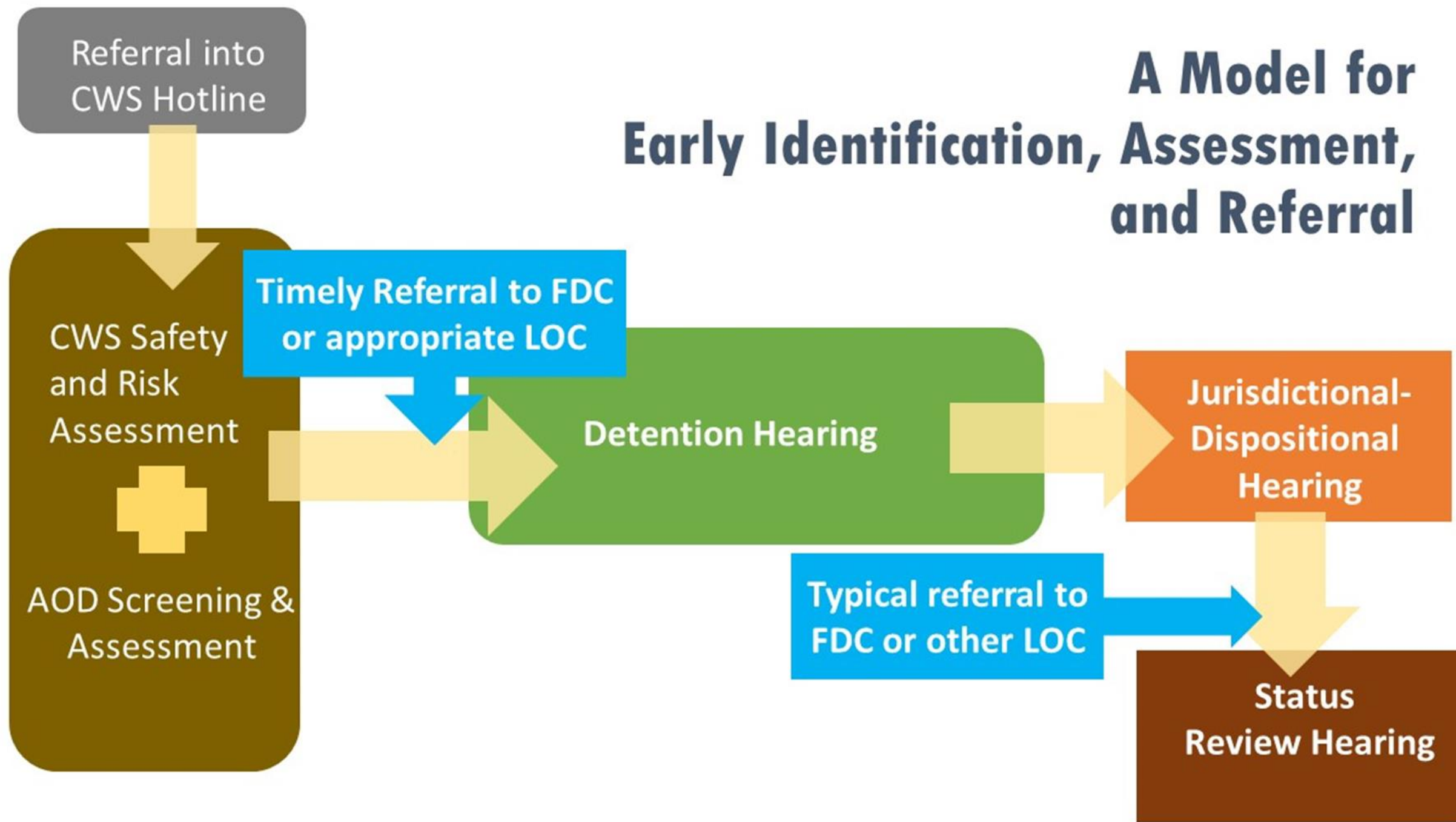
**Treatment and Recovery –
ongoing process that may
take longer**

**Child Development –
Impact of removal on the child and
parent-child relationship**

Early Identification

- **At the earliest point possible – integrated with risk and safety assessment by CWS**
- **Multi-prong approach – including screening tools, drug testing, reports, and observations**
- **Structured protocols that send clients with positive screening to timely assessment**
- **Warm hand-offs, follow-ups, and communication are critical**

A Model for Early Identification, Assessment, and Referral



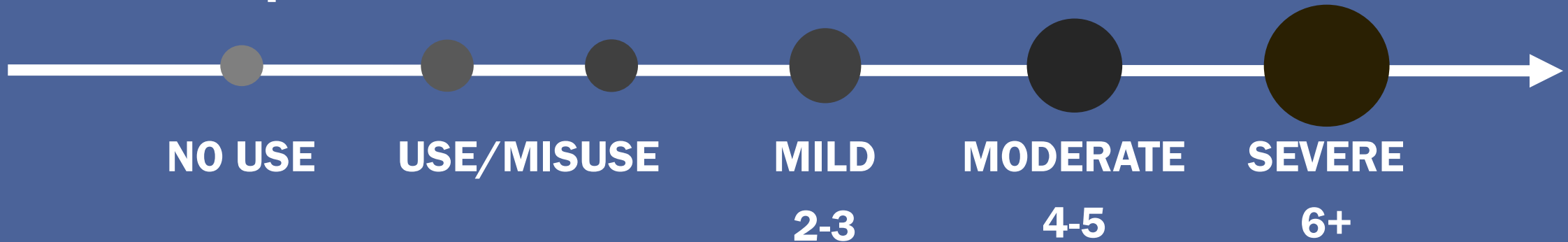
Diagnosing Substance Use Disorders

The Court should ensure that structured clinical assessments are congruent with DSM-V diagnostic criteria

Substance Use Disorders

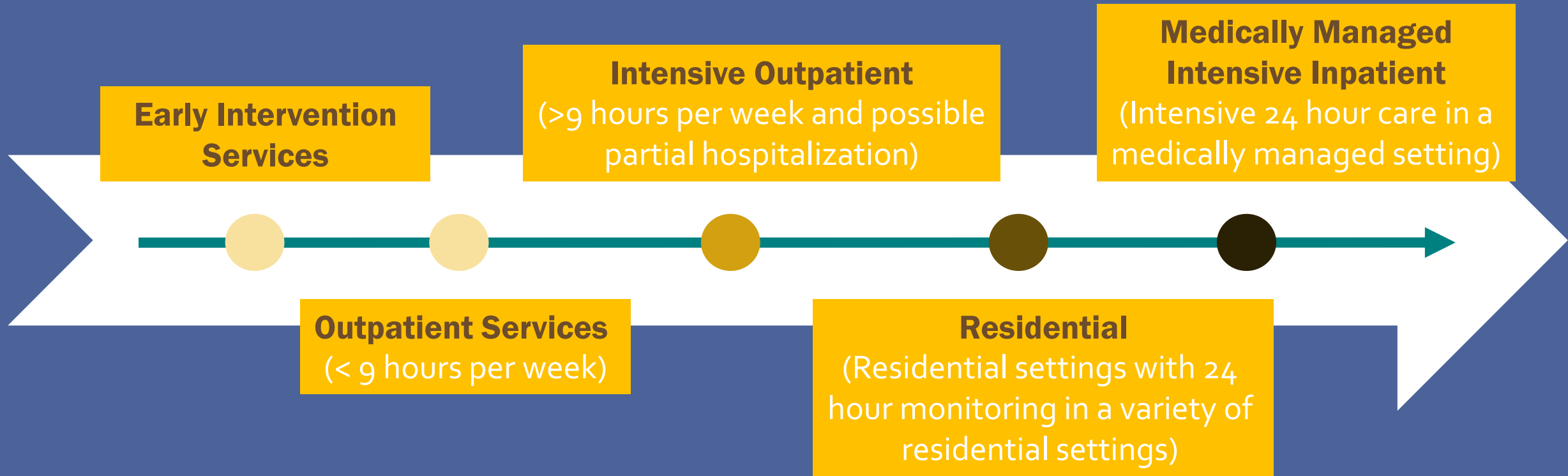
DSM-V

Experimental Use



DSM-V Criteria (11 total)

Levels of Treatment Services Across a Continuum of Care



Source: American Society of Addiction Medicine, 2016

Time To & Time In Treatment Matters

In a longitudinal study of mothers (N=1,911)

**Entered substance use
disorder treatment faster
after their children were
placed in substitute care**



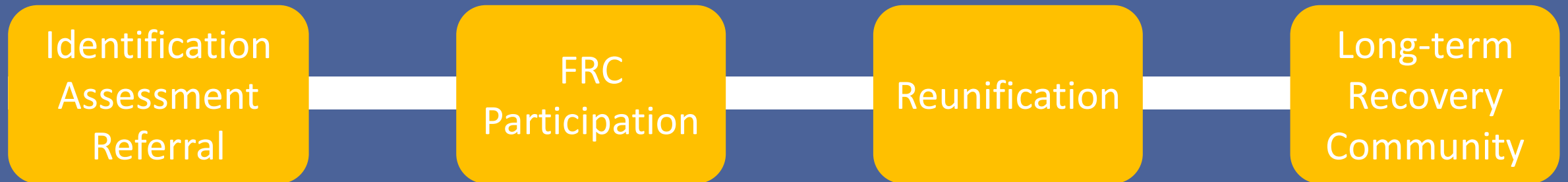
Stayed in treatment longer

**Completed at least one
course of treatment**



**Significantly more likely to
be reunified with their
children**

Ongoing Recovery Support



Each phase has its own unique recovery needs and supports



- Peer Mentor
- Peer Specialist
- Peer Providers
- Parent Partner

**Experiential Knowledge,
Expertise**

Titles and Models

- Recovery Support Specialist
- Substance Abuse Specialist
- Recovery Coach
- Recovery Specialist
- Parent Recovery Specialist

**Experiential Knowledge, Expertise +
Specialized Trainings**

YOU NEED TO ASK:

What does our program and community need?

Recovery Support Matters

A Randomized Control Trial – Cook County, IL (n=3440)

**Comprehensive
Screening &
Assessment**



**Early Access to
Treatment**

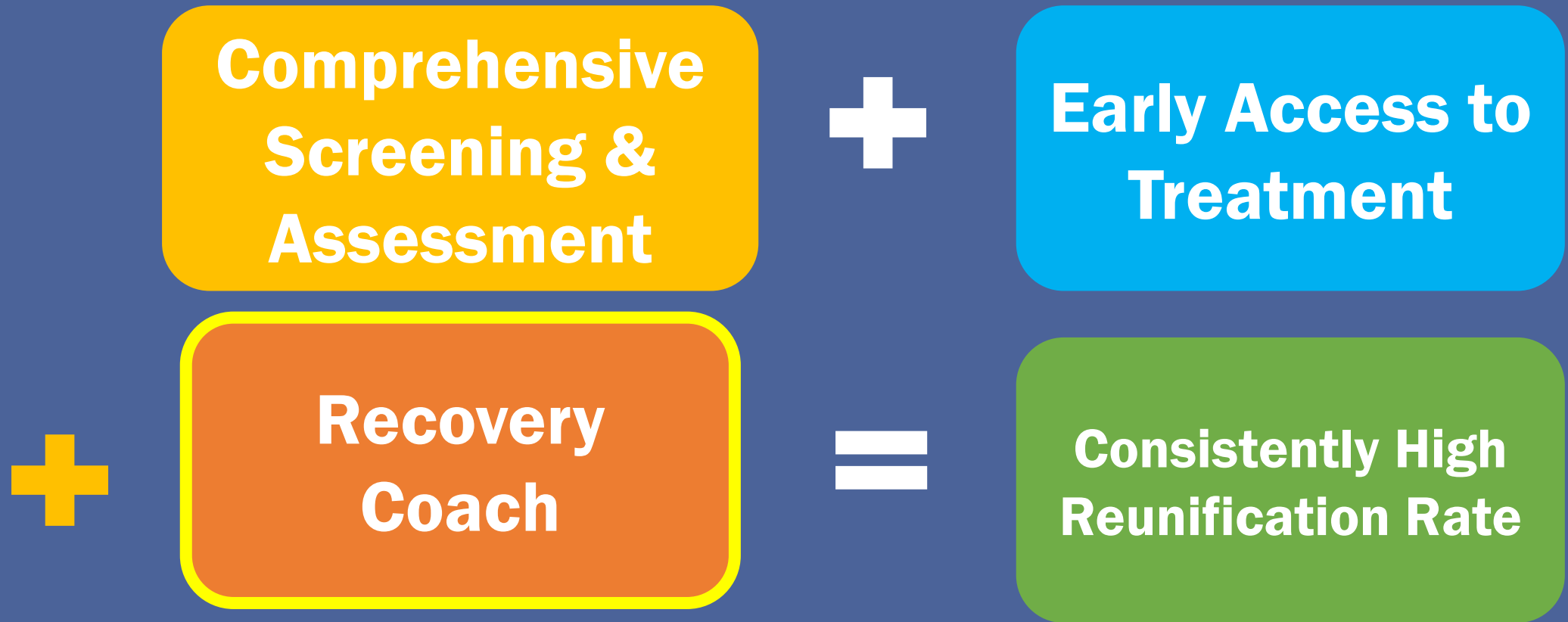


**Consistently High
Reunification Rate**

Ryan, Perron, Moore, Victor & Park (2017) "Timing matters: A randomized control trial of recovery coaches in foster care, Journal of Substance Abuse Treatment (77): 178-184.

Recovery Support Matters

A Randomized Control Trial – Cook County, IL (n=3440)



Ryan, Perron, Moore, Victor & Park (2017) "Timing matters: A randomized control trial of recovery coaches in foster care, Journal of Substance Abuse Treatment (77): 178-184.

System Walk-Through

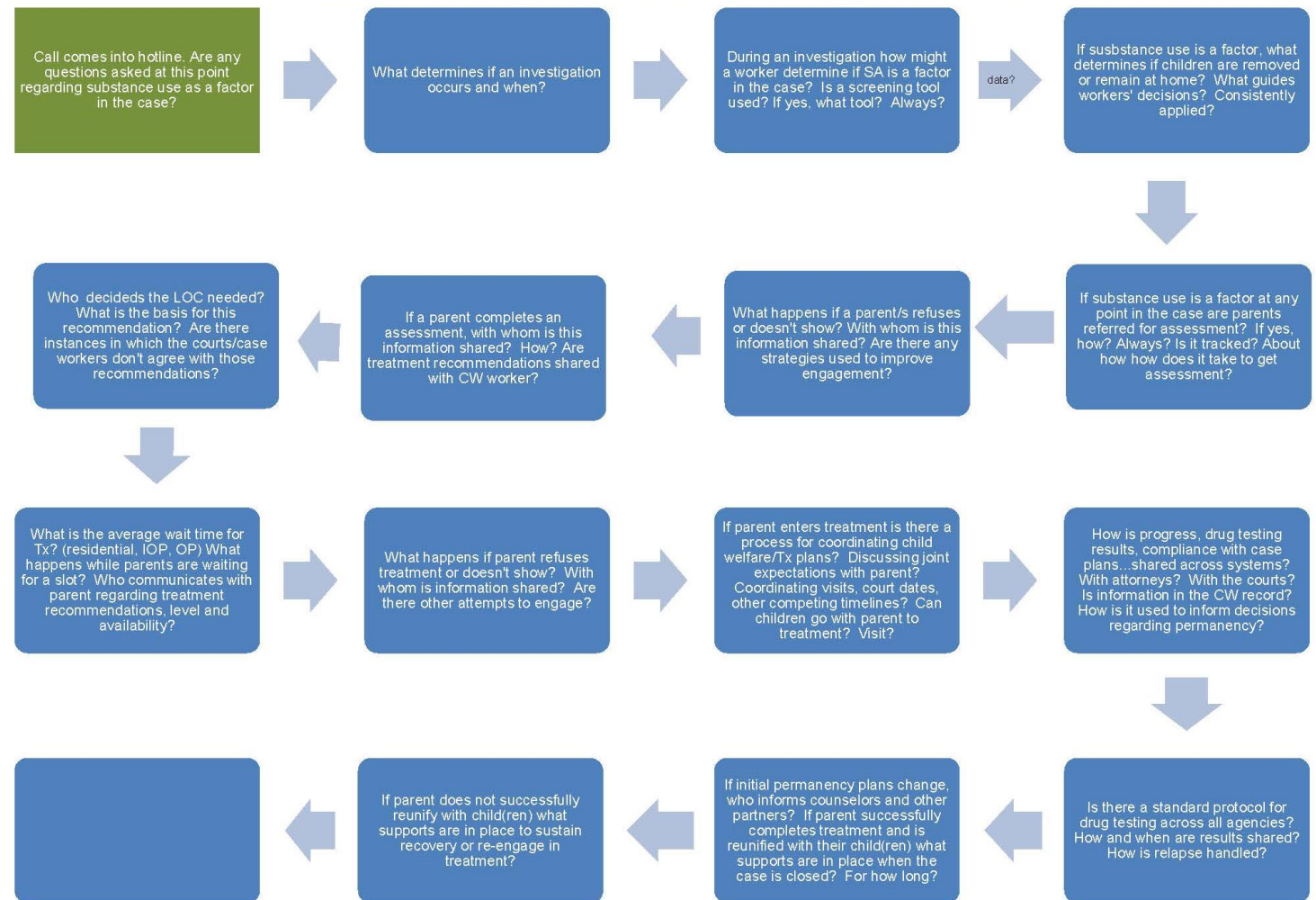
Screening

Assessment

Referral

Monitoring

Flow Chart: Child Welfare Involved Families With Substance Use Disorders



5

**How will you train
stakeholders and
partners?**

Develop a plan for interagency training

Becoming Consumers of Quality Treatment?

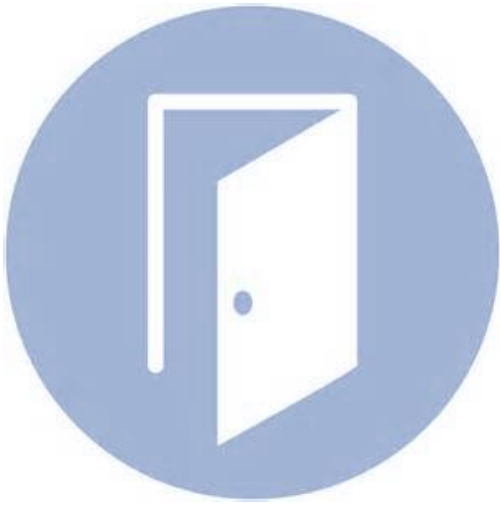
- **Is it evidence-based? Will you offer medication-assisted treatment?**
- **Is it trauma-informed? Will you offer trauma-focused services?**
- **Is it family-centered? Will you offer services to focus on the parent-child relationship?**
- **Is it gender-responsive? Will you offer services specifically on engaging fathers?**
- **Is it culturally competent? How will you serve families of color?**

Understanding Your Partners

- **Legal mandates of each system, including ASFA timelines**
- **Information sharing, including confidentiality regulations**
- **Collaborative values**
- **Collaborative capacities**

Educating Your Community About FRC Program

- **Mission, goals, objectives**
- **Target population, eligibility criteria**
- **Referral process**
- **Phasing system**
- **Case staffing**
- **Court processing**
- **Desired shared outcomes**



Assessing Collaborative Capacity

- **Examine mission & values – *where is there agreement and divergence?***
- **Conduct system walk-throughs – *how are clients moving through systems?***
- **Conduct drop-off analysis – *what happens to clients?***
- **Data profile to establish data baselines – *compared to what?***
- **Feedback from front-line staff and providers – *what is really happening?***
- **Feedback from clients – *what is their experience?***
- **Assess cross-training needs – *where are there knowledge gaps?***

Peer Learning Opportunities



Visit an FRC
as a team

King County, WA

Tompkins County, NY

Wapello County, IA

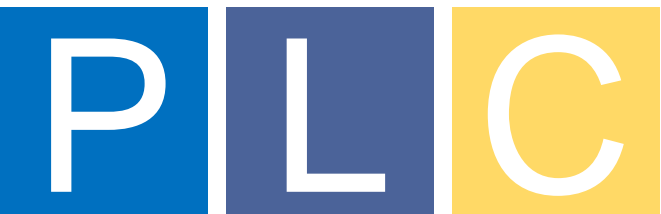
Sacramento County, CA

Dunklin County, MO

Jefferson County, CO

Tulsa County, OK

Miami-Dade County, FL



Awardees

**If you want to go fast,
go alone.**

**If you want to go far,
go together.**

African Proverb





**You can
do this.
We can
help.**



NDCI
NATIONAL DRUG
COURT INSTITUTE



Center for Children and Family Futures
Strengthening Partnerships. Improving Family Outcomes



Family Treatment Court

PLANNING GUIDE

- **Designed to provide step-by-step instructions**
- **Use Guide to gather needed information to present FTC concept**
- **Worksheet Activities**



Resources

- **Video presentation (30 minutes)**
- **Team Discussion Guide**
- **Café Conversation – IN, OH, FL (April 2018)**
- **Action Guide**



Take Action Guide

- Take the next step
- Resources to help you move forward
- Contact us @ fdc@cffutures.org



Contact Information

Family Drug Court Training and Technical Assistance Team

Center for Children and Family Futures

(714) 505-3525

fdc@cfffutures.org

www.cfffutures.org